

MV-MD129-DV

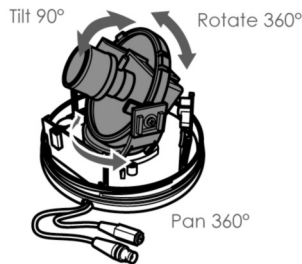
Mini Dome Camera's



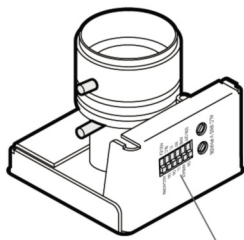
The AVE MD series mini domes are the industry leader in terms of colour camera performance, ease of installation, configuration choices and mounting options. Featuring the latest in CCD and DSP technology, offering exceptional low light performance, accurate colour reproduction and 540 TVL of resolution. This is matched with a high quality 2.9~10mm Auto Iris lens, offering a range of focal lengths to suit the vast majority of applications. The AC/DC Universal Switching Power Supply provides a choice of power options for the installer. The MD4 series has been designed for fast and efficient installation featuring load-able screws for quick and easy surface wall mount, or ceiling installation using the optional quick ceiling install kit. The unique 3-Axis camera gimbal allows unrestricted configuration of lens position, focal length adjustment and focusing. The mini domes are ideally suited for all applications where enhanced resolution and sensitivity are required, such as shopping centres, car parks, schools and airports..



MV-MD129-DV



3-Axis Gimbal Chassis



DIP switch adjustments

Features

- 540 TVL in Day Modem / 570 TVL in Night Mode.
- Ivory polycarbonate housing and clear bubble.
- High resolution colour Sony CCD.
- 0.6 Lux @ F1.2.
- User configurable LL, BLC, AGC, AWB, Flickerless, SDN (software day / night).
- Dual 12VDC/24VAC auto sensing power.
- 2.9~10mm lens.
- Quick Install Pipe (Optional).
- Service jack.

General Specifications

Image Size	Sony 1/3 Format Interline CCD Sensor
Pixel Element	752 (H) × 582 (V) approx. 430K pixels
Scanning Frequency	PAL 2 : 1 Interlace H : 15625Hz , V : 50.0Hz
Operation Temperature	-10°C ~ +50°C
Storage Temperature	-20°C ~ +65°C
Power Source	AC power supply 19.0VAC ~ 28.0VAC DC power supply 10.0VDC ~ 30VDC
Power Consumption	4.2W Max
Lens Type	Varifocal
Focal Length	2.9mm to 10mm, F1.2 Lens
Mount	Direct Mount
External Dimensions	Ø120X100(H) mm
Weight	330g

Functional Specifications

Exposure Control	DC Auto IRIS Drive
Auto IRIS Control	DC Drive
Video IRIS Output	1.0Vpp (100IRE Video Output)
BLC	Centre Area for Auto IRIS
White Balance	Auto White Balance
AWB Range	AWB: 2700K ~ 11000K AWB-EX: 2000K ~ 18000K
Day & Night	Software Day/Night Feature
AGC Boost	Enhanced AGC Gain to Max. 30dB
SYNC System	INT / Line Lock
Line Lock	Phase Adjust Range 0°~ 270°
Frequency Range	50Hz +/- 1Hz

AVE (UK)
Endeavour House,
Coopers End Road,
Stansted,
Essex, CM24 1SJ

Tel: +44 (0)845 600 9323
Fax: +44 (0)845 600 9363
Email: avesales@ave-uk.com
Web: www.ave-uk.com

AVE (Europe)
123 Millennium Business Park
Ballycoolin
Dublin 11
Rep. Of Ireland

Tel: +353 (1) 8647450
Fax: +353 (1)8647451
Email: avesales@ave-europe.eu
Web: www.ave-europe.eu

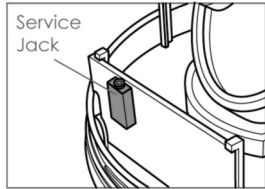
AVE (USA)
2501 Central Parkway, Suite C1
Houston,
Texas TX 77092

Tel: 281-443-2300
Fax: 281-443-8915
Email: sales@aveusa.com
Web: www.aveusa.com

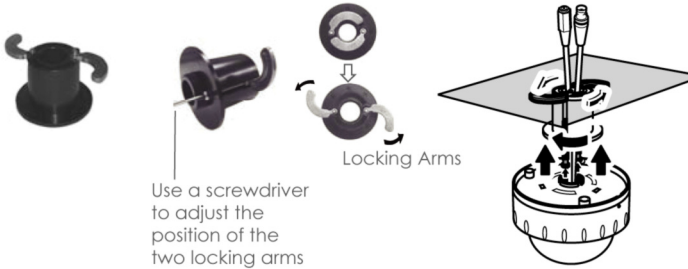


Detailed Specification

Service lead for easy configuration and focusing of the camera when installed
Installer friendly
Length 3 ft (92 cm)



Installer friendly.
Universal ceiling/wall mount.
Reduces installation time to a minimum.



Use a screwdriver to adjust the position of the two locking arms

Video Specifications

Resolution	Day Mode: 540 TVL Night Mode: 570 TVL
Minimum Illumination	0.65 Lux @ F=1.2 (50IRE Video Output)
Video Output	1.0Vpp 75Ohm BNC unbalanced
S/N Ratio	50dB
AGC Ex Gain	30dB
AGC Preset Gain	26dB
H Aperture	10 IRE (r 0.45 100IRE Video Output)
V Aperture	10 IRE (r 0.45 100IRE Video Output)
Gamma Compensation	0.45

Functional Control

Exposure Control	DC Drive with variable-Resistor
Software	Day/Night OFF / ON
Back Light Compensation	OFF / ON
AGC Selectable	AGC-EX / AGC Norm
SYNC System	INT / LL
Flicker-less	OFF / ON
Auto White Balance	AWB / AWB-EX
Line Lock Vertical Phase	Var.-Resistor on Side Panel
DC IRIS Level Control	Var.-Resistor on Side Panel

Lens Specifications - 2.9 ~ 10mm

Type of Focal	Varifocal, 2.9~10mm
Type of Iris	DC Drive Auto-Iris
Iris Range	F1.2 ~ 360
Field of View	Diagonal: 125°~36° Horizontal: 94.6°~28.8° Vertical: 68.4°~21.6°
Minimum Object Distance	0.15m
Lens Type	Aspherical

AVE (UK)
Endeavour House,
Coopers End Road,
Stansted,
Essex, CM24 1SJ

Tel: +44 (0)845 600 9323
Fax: +44 (0)845 600 9363
Email: avesales@ave-uk.com
Web: www.ave-uk.com

AVE (Europe)
123 Millennium Business Park
Ballycoolin
Dublin 11
Rep. Of Ireland

Tel: +353 (1) 8647450
Fax: +353 (1) 8647451
Email: avesales@ave-europe.eu
Web: www.ave-europe.eu

AVE (USA)
2501 Central Parkway, Suite C1
Houston,
Texas TX 77092

Tel: 281-443-2300
Fax: 281-443-8915
Email: sales@aveusa.com
Web: www.aveusa.com